



secretion aspirators

secretion aspirators

*Optimal secretion management
with Double Filter System DFS®*



ASSKEA „S“-series

The ASSKEA secretion aspirators **S-series** are mains-operated medical aspirators used for temporary aspiration of aspirate from the trachea.

The ASSKEA secretion aspirators **S-series** are ideally suited for use in hospitals, but can also be used for care and rehabilitation in the private sphere (homecare) for the respective patient.



ASSKEA „M“-series

The ASSKEA secretion aspirators **M-series** are network-independent, mobile medical aspirators and are used for temporary and primarily spontaneous aspiration of aspirate from the trachea.

Typical areas of application are:

- in outpatient and inpatient care,
- in homecare, especially for aspiration in tracheostomy patients.



Double Filter System DFS®

Get the benefit of true **anti-overflow security** with the **DFS® system**. True security with reconditioning at the highest standard and most reasonable price yet achieved by an aspirator manufacturer. **DFS®** means the best in aspirator safety over the longest lifetime.

As soon as a blockage is detected in the tube connector, the system stops the aspiration. The interior of the unit is immediately and completely protected from contamination. In case of a blockage the **DFS®** can simply be exchanged so that the unit is ready to use again, straight away.



ASSKEA - aspirators for inpatient or outpatient aspiration – safe and efficient!

The ASSKEA secretion aspirators are medical aspirators for temporary and primarily spontaneous aspiration of aspirate.

- Functional design
- Easy to use
- Very safe to use
- DFS[®] - Double filter system protects the interior of the unit from contamination

Indications

- Tracheostomy patients
- Aspiration on impaired respiratory function
- Aspiration of blood, secretion and food residues from the oral cavity, the pharyngeal zone and the bronchial system
- Evacuation of vacuum mattresses and vacuum splints

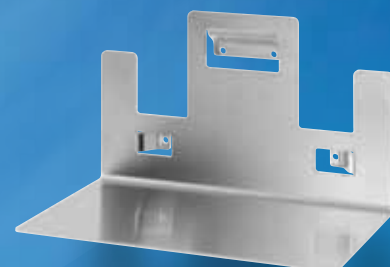
Accessories – for use with all types of ASSKEA devices

Canister:

- ASSKEA reusable secretion canister system (1l)
- ASSKEA disposable secretion canister system (1l)

Holders:

- Universal bed holder
- Variable holder for pipe and rail systems
- Wall holder stainless steel



ASSKEA „S”-series (stationary)

- mains powered medical aspirators for inpatients
- nominal mains voltage: 230 V AC / 50 Hz
- analog units



ASSKEA S20K

- Item no. (REF): 100011-3
- Flow rate: 18l/min \pm 3l/min
- Operating time: 20 minutes ON, 40 minutes OFF
- HiMi no.: 01.24.01.0023 (German medical aids code)



ASSKEA S20

- Item no. (REF): 100009-3
- Flow rate: 18l/min \pm 2l/min
- Operating time: 20 minutes ON, 40 minutes OFF
- HiMi no.: 01.24.01.0024 (German medical aids code)



ASSKEA S30

- Item no. (REF): 100010-3
- Flow rate: 28l/min \pm 2l/min
- Operating time: 20 minutes ON, 40 minutes OFF
- HiMi no.: 01.24.01.1016 (German medical aids code)

ASSKEA „M”-series (mobile)

- mobile medical aspirators, independent of mains power supply
- nominal voltage of power supply
100–240 V AC / 50–60 Hz / 12 V DC
- digital units



ASSKEA M20

- Item no. (REF): 100003-3
- Flow rate: 18l/min \pm 2l/min
- Operating time: approx. 45 minutes ON, 10 minutes OFF
- HiMi no.: 01.24.02.0018 (German medical aids code)



ASSKEA M30PLUS

- Item no. (REF): 100004PLUS
- Flow rate: 30l/min \pm 3l/min
- Operating time: 40 minutes ON, 10 minutes OFF
- HiMi no.: 01.24.02.1015 (German medical aids code)

ASSKEA®
medical

ASSKEA GmbH
Haßlocher Str. 9
99189 Gebesee / Germany

Telephone: +49 36201 57 97 - 0
Fax: +49 36201 57 97 - 33

info@asskea.de
www.asskea.de