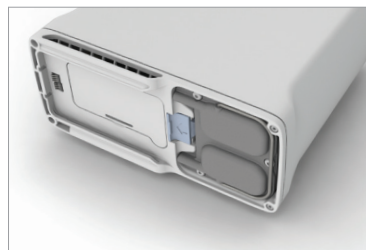


## Inogen One® G4 Column Change Procedure

**NOTE** Column change instructions are only to be used when maintenance is required and are not intended for practice purpose.

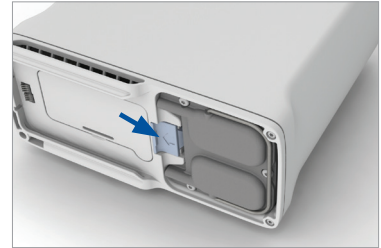
1. Turn off the Inogen One® G4 concentrator by pressing the power button to shut down the device.
2. Remove the Inogen One® G4 concentrator from the carry case, if applicable.
3. Remove the battery from the Inogen One® G4 concentrator.
4. Place the Inogen One® G4 concentrator on its side so that the underside is visible. The metal column assembly can be seen on one side of the device.



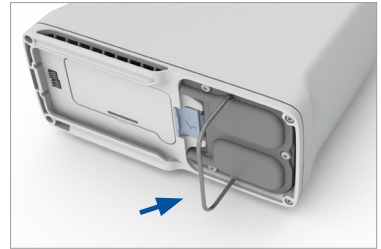
## Inogen One® G4 Column Change Procedure (continued)

5. Unlock the column assembly by pushing the latch button away from the columns.

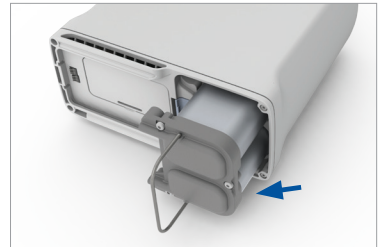
Open and unlocked



6. While holding the button open, slide the column assembly out of the device by pulling on the column pull handle.



7. Remove the columns completely from the Inogen One® G4. Both columns are removed as one piece.



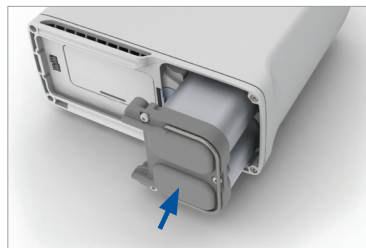
### Column (metal tube) Installation

8. Remove dust caps of new column assembly. Make sure there is no dust or debris where the dust caps were located.



## Inogen One® G4 Column Change Procedure (continued)

9. Insert column assembly into the Inogen One® G4 concentrator. Do not leave the column ends exposed; column assembly should be inserted into the Inogen One® G4 as soon as the dust caps have been removed.



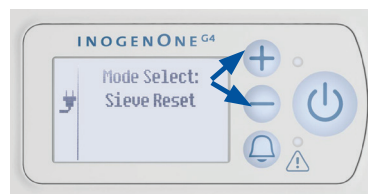
10. Push the column assembly into the device such that the columns are fully seated into the Inogen One® G4 concentrator. The spring loaded latch button should fully return to the closed position.


Closed and locked




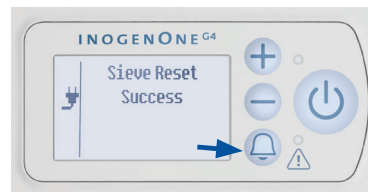
11. Connect the AC power supply cord to the Inogen One® G4 and plug the power supply AC cord into an electrical outlet. Do Not Power on the Inogen One® G4 concentrator.

12. Press and hold the plus (+) and (-) minus button for 5 seconds. The screen will display “sieve reset” message. Release button once message is displayed on screen.



13. Press the alert  button once and screen will display “sieve reset success”.

14. Press the power  button to turn on the Inogen One® G4, and use normally.



**WARNING** Do not use any columns other than those specified in this user manual. The use of non-specified columns may create a safety hazard and/or impair equipment performance and will void your warranty.

